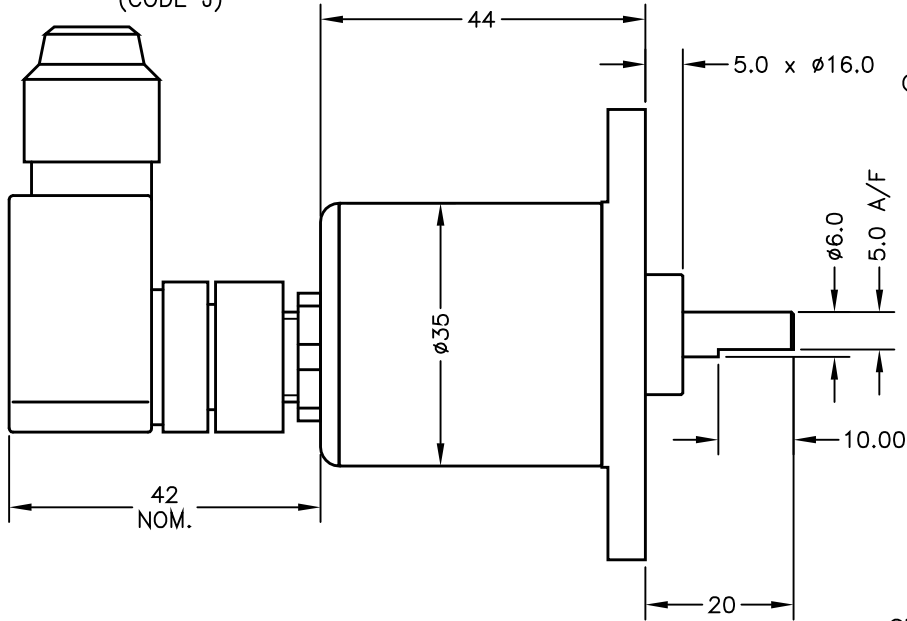
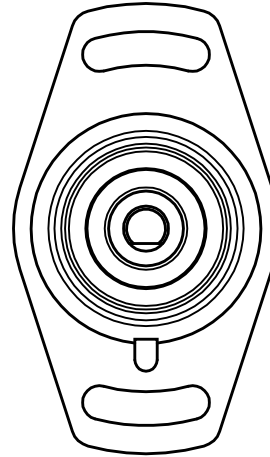


IP67 M12 CONNECTOR  
(CODE J)



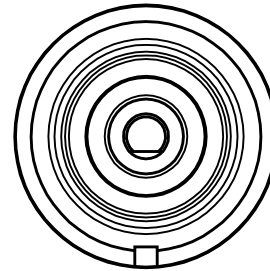
FLANGED BASE  
SYMMETRICAL FLANGE ø60 WITH 2  
OFF 4.4 SLOTS ±15° ON 48.0 PCD.



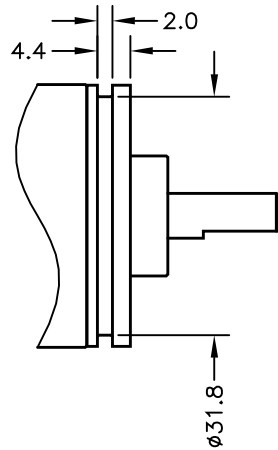
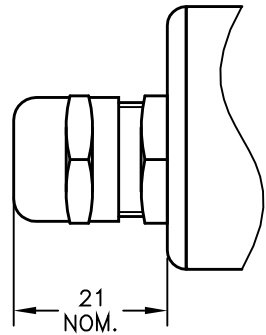
INCREASING O/P  
CALIBRATED SECTOR

SHAFT FLAT ALIGNED WITH REFERENCE  
MARK IN BASE AT MID TRAVEL ±5°

SERVO MOUNT  
(CODE 'P')



CABLE + IP67 GLAND  
- AXIAL (CODE 'Lxx')



ELECTRICAL SPECIFICATIONS

OUTPUT 0.5 TO 4.5V RATIO METRIC  
SUPPLY 5V

CABLE LENGTH ORDERED IN cm. 1500cm MAX.  
3-CORE SCREENED: 0.2mm<sup>2</sup>, ø4mm PUR JACKET

CABLE/CONNECTOR CONNECTIONS;

3 CORE CONNECTOR  
RED 1 +Ve  
BLACK 3 0V  
WHITE 2 OUTPUT  
SCREEN 4 BODY

BODY MATERIAL:- STAINLESS STEEL.  
FLANGE BASE MATERIAL:- STAINLESS STEEL.  
SERVO MOUNT MATERIAL:- STAINLESS STEEL.

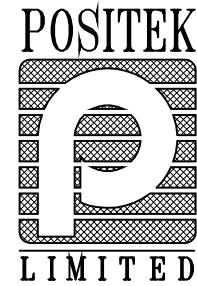
FURTHER OPTIONS:  
SPRING RETURN (CODE 'N') AVAILABLE UP TO  
±50 DEGREES CALIBRATED ROTATION, PHYSICAL  
STOPS ±55 DEGREES.  
NOTE STANDARD DEVICE HAS NO STOPS.

NOTE:- READ INSTALLATION SHEET E500-19  
FOR FULL INSTRUCTIONS FOR USE.

ATEX APPROVED TO	
II 1GD	
EEx ia IIC T4 (Ta= -40° to +80°C)	
Ex iaD 20 T135°C (Ta= -40° to +80°C)	
Ui 11.4V, Ii 0.46A, Pi 0.51W	
APPROVED FOR USE WITH A GALVANICALLY ISOLATED BARRIER.	

A	FIRST ISSUE.	PDM

DRAWINGS NOT TO BE CHANGED WITHOUT REFERENCE TO THE CHANGE PROCEDURE.  
CHANGES TO PARTS USED IN INTRINSICALLY SAFE PRODUCT MUST BE APPROVED  
BY THE AUTHORISED PERSON  
THIS IS AN UNCONTROLLED PRINT AND WILL NOT BE UPDATED.



A	30/11/06		CHECKED BY	X ±0.4
			RDS	X.X ±0.2 X.XX ±0.1 DIMs mm
		DESCRIPTION		
		E500 INTRINSICALLY SAFE ROTARY SENSOR		
SCALE		DRAWING		
10mm		NUMBER E500-11 REV A		
		SHEET 1 OF 1		