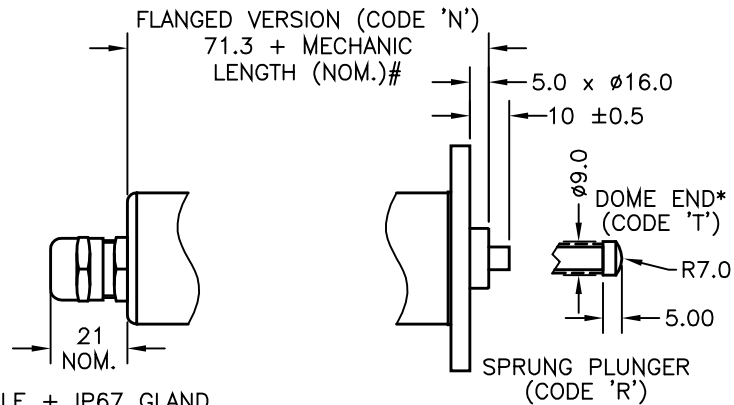
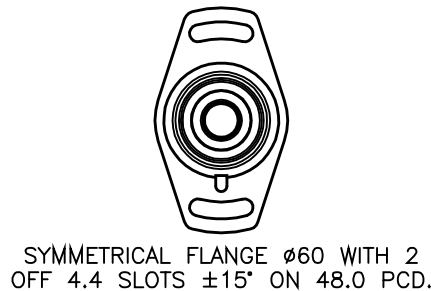


IP67 M12 CONNECTOR (CODE J)



CABLE + IP67 GLAND - AXIAL (CODE 'Lxx')



* DOME END OPTION ONLY AVAILABLE WITH OPTION 'R'.

#MECHANICAL LENGTH:
SENSORS MADE WITH STANDARD MECHANICAL TRAVEL OF BETWEEN 10, 20, 30 & 50mm, ELECTRICAL OUTPUT CAN BE CALIBRATED AS REQUIRED IN THE NEAREST (LARGER) MECHANICAL TRAVEL.

#MECHANICAL LENGTH:
SENSORS MADE WITH STANDARD MECHANICAL TRAVEL OF BETWEEN 10, 20, 30 & 50mm, ELECTRICAL OUTPUT CAN BE CALIBRATED AS REQUIRED IN THE NEAREST (LARGER) MECHANICAL TRAVEL.

DRAWINGS NOT TO BE CHANGED WITHOUT REFERENCE TO THE CHANGE PROCEDURE. CHANGES TO PARTS USED IN INTRINSICALLY SAFE PRODUCT MUST BE APPROVED BY THE AUTHORISED PERSON
THIS IS AN UNCONTROLLED PRINT AND WILL NOT BE UPDATED.

ELECTRICAL SPECIFICATIONS

<u>OUTPUT</u>	<u>SUPPLY</u>
0.5 TO 4.5V RATIO METRIC	5V

CABLE LENGTH ORDERED IN cm. 1500cm MAX.
3-CORE SCREENED: 0.2mm², Ø4mm PUR JACKET

CABLE/CONNECTOR CONNECTIONS;

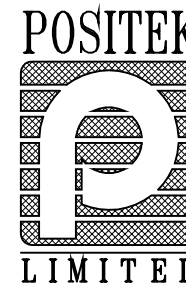
3 CORE CONNECTOR	
RED 1	+Ve
BLACK 3	0V
WHITE 2	OUTPUT
SCREEN 4	BODY

BODY MATERIAL:- STAINLESS STEEL.
FLANGE MATERIAL:- STAINLESS STEEL (CODE 'N').
FURTHER OPTIONS:
PLUNGER FREE (CODE 'V')

NOTE:- READ INSTALLATION SHEET M103-19 FOR FULL INSTRUCTIONS FOR USE.

ATEX APPROVED TO	
I/II M1/1GD	
EEx ia I/II C T4 (Ta= -40° to +80°C)	
Ex iaD 20 T135°C (Ta= -40° to +80°C)	
Ui 11.4V, Ii 0.46A, Pi 0.51W	
APPROVED FOR USE WITH A GALVANICALLY ISOLATED BARRIER.	

A	FIRST ISSUE.	PDM



A	30/11/06		CHECKED BY	X ±0.4
			RDS	X.X ±0.2 X.XX ±0.1 DIMs mm
		DESCRIPTION		
		M103 INTRINSICALLY SAFE SHORT STROKE LINEAR POSITION SENSOR		
SCALE 20mm		DRAWING NUMBER M103-11 REV A		
		SHEET 1 OF 1		