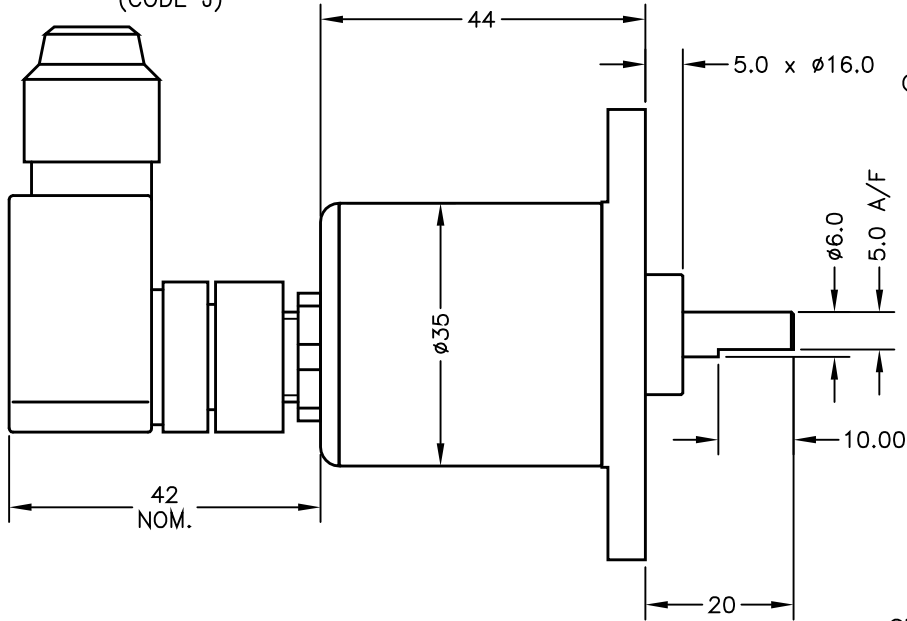
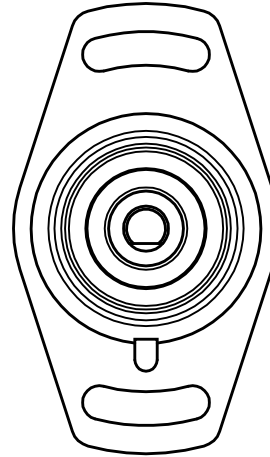


IP67 M12 CONNECTOR
(CODE J)



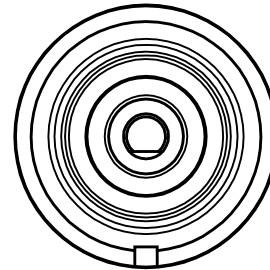
FLANGED BASE
SYMMETRICAL FLANGE ø60 WITH 2
OFF 4.4 SLOTS ±15° ON 48.0 PCD.



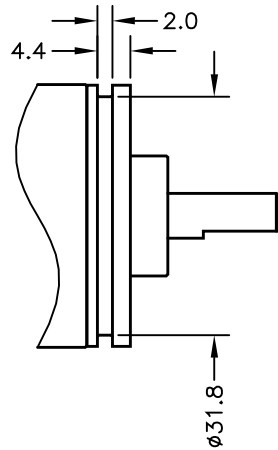
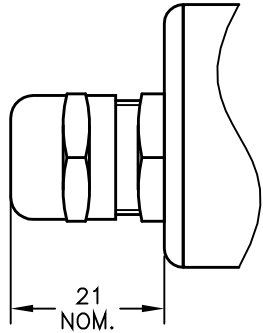
INCREASING O/P
CALIBRATED SECTOR

SHAFT FLAT ALIGNED WITH REFERENCE
MARK IN BASE AT MID TRAVEL ±5°

SERVO MOUNT
(CODE 'P')



CABLE + IP67 GLAND
- AXIAL (CODE 'Lxx')



ELECTRICAL SPECIFICATIONS

OUTPUT 0.5 TO 4.5V RATIO METRIC
SUPPLY 5V

CABLE LENGTH ORDERED IN cm. 1500cm MAX.
3-CORE SCREENED: 0.2mm², ø4mm PUR JACKET

CABLE/CONNECTOR CONNECTIONS;

3 CORE CONNECTOR
RED 1 +Ve
BLACK 3 0V
WHITE 2 OUTPUT
SCREEN 4 BODY

BODY MATERIAL:- STAINLESS STEEL.
FLANGE BASE MATERIAL:- STAINLESS STEEL.
SERVO MOUNT MATERIAL:- STAINLESS STEEL.

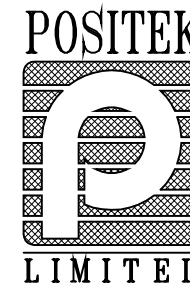
FURTHER OPTIONS:
SPRING RETURN (CODE 'N') AVAILABLE UP TO
±50 DEGREES CALIBRATED ROTATION, PHYSICAL
STOPS ±55 DEGREES.
NOTE STANDARD DEVICE HAS NO STOPS.

NOTE:- READ INSTALLATION SHEET M500-19
FOR FULL INSTRUCTIONS FOR USE.

ATEX APPROVED TO	
I/II M1/1GD	
EEx ia I/II C T4 (Ta= -40° to +80°C)	
Ex iaD 20 T135°C (Ta= -40° to +80°C)	
Ui 11.4V, Ii 0.46A, Pi 0.51W	
APPROVED FOR USE WITH A GALVANICALLY ISOLATED BARRIER.	

A	FIRST ISSUE.	PDM

DRAWINGS NOT TO BE CHANGED WITHOUT REFERENCE TO THE CHANGE PROCEDURE.
CHANGES TO PARTS USED IN INTRINSICALLY SAFE PRODUCT MUST BE APPROVED
BY THE AUTHORISED PERSON
THIS IS AN UNCONTROLLED PRINT AND WILL NOT BE UPDATED.



A	30/11/06		CHECKED BY	X ±0.4
			RDS	X.X ±0.2 X.XX ±0.1 DIMs mm
DESCRIPTION				
M502 INTRINSICALLY SAFE SMALL ANGLE ROTARY SENSOR				
SCALE 10mm 		DRAWING NUMBER M502-11 REV A		
SHEET 1 OF 1				