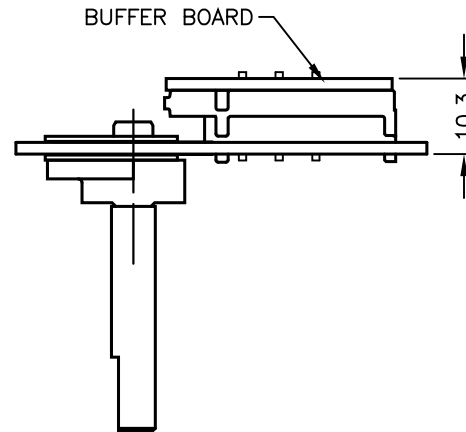
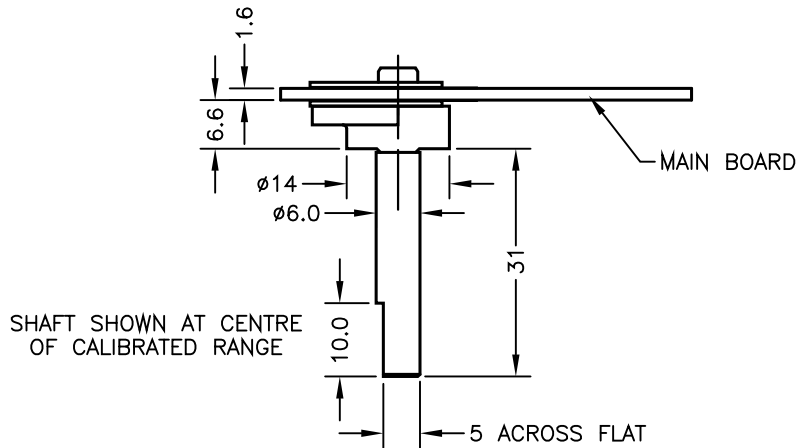
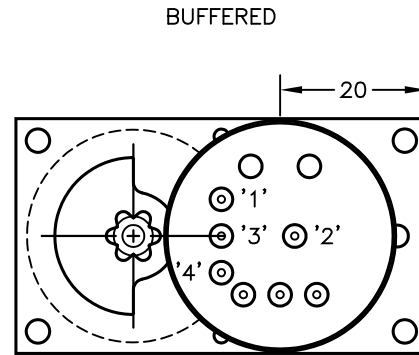
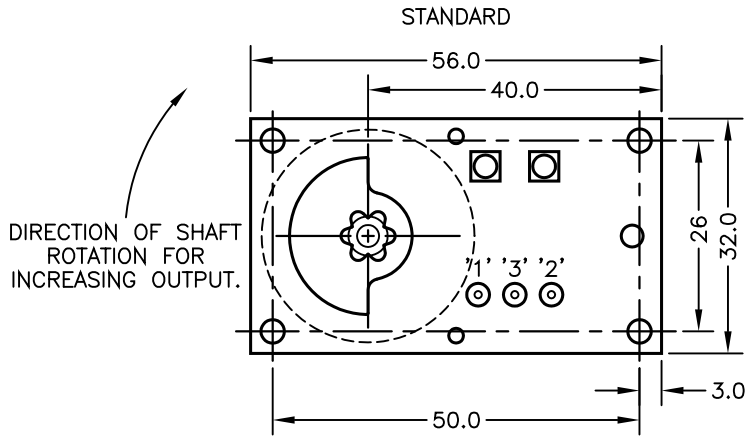


4 $\phi 3.2$ MOUNTING HOLES WITH
 $\phi 6$ CLEARANCE ON BOTH SIDES OF PCB.



SPECIAL MOUNTING NOTE:
 THE RADIAL POSITION OF THE SHAFT MUST BE CONTROLLED BY THE CUSTOMER. THE END FLOAT OF THE SHAFT IS SET BY THE SENSOR AND SHOULD NOT BE CONTROLLED BY THE CUSTOMER.

DRAWINGS NOT TO BE CHANGED WITHOUT REFERENCE TO THE CHANGE PROCEDURE.
 CHANGES TO PARTS USED IN INTRINSICALLY SAFE PRODUCT MUST BE APPROVED BY THE AUTHORISED PERSON
 THIS IS AN UNCONTROLLED PRINT AND WILL NOT BE UPDATED.

H	REDRAWN, OPTIONS B & G ADDED.	PDM
I	HUB ROTATED 180 - RAN200	PDM
J	HUB ORIENTATION AS REV H - RAN257	PDM

ELECTRICAL OPTIONS/ SPECIFICATIONS

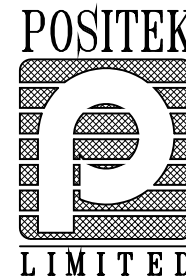
OUTPUT

OUTPUT OPTION	A	0.5 TO 4.5V RATIO METRIC	STANDARD	
	B	$\pm 5V$		
	C	0.5 TO 9.5V		
	D	$\pm 10V$		
	E	0.5 TO 4.5V		BUFFERED
	F	SUPPLY CURRENT 12mA TYP. 20mA MAX.		
	G	4 TO 20mA 2-WIRE		
	H	4 TO 20mA 3-WIRE SINK		
		4 TO 20mA 3-WIRE SOURCE		
		SINK VERSION OUTPUT COMPLIANCE 5-28V		
	SOURCE VERSION DRIVE 300 Ω MAX TO 0V			

ELECTRICAL CONNECTION: SOLDER PINS

- '1' - SUPPLY POS.
- '2' - OUTPUT SIGNAL
- '3' - GROUND
- '4' - SUPPLY NEG.

N.b. MAIN AND BUFFER CIRCUIT BOARDS ARE DOUBLE SIDED, ALLOW 3.5mm FROM BOARD SURFACES FOR COMPONENTS.



H	06/10/06		CHECKED BY	X	± 0.4
I	18/02/08		RDS	X.X	± 0.2
J	24/11/09			X.XX	± 0.1
					DIMS mm
DESCRIPTION					
P503 RIPS FLAT ROTARY SENSOR ASSEMBLY					
SCALE 10mm					
DRAWING NUMBER P503-11 REV J					
SHEET 1 OF 1					