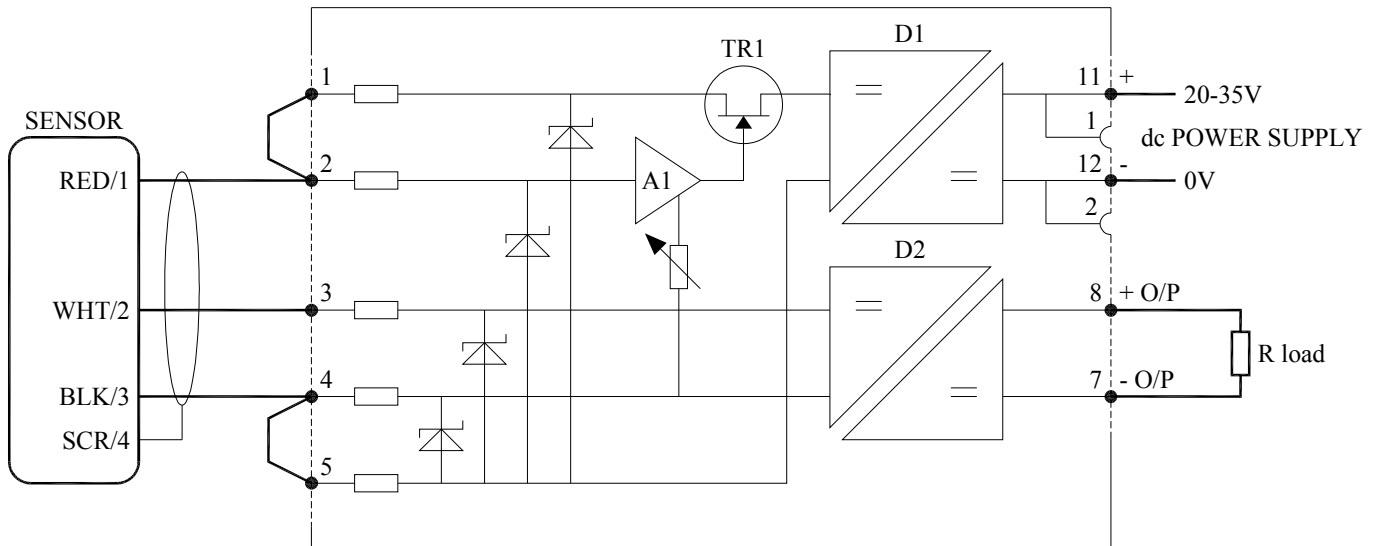


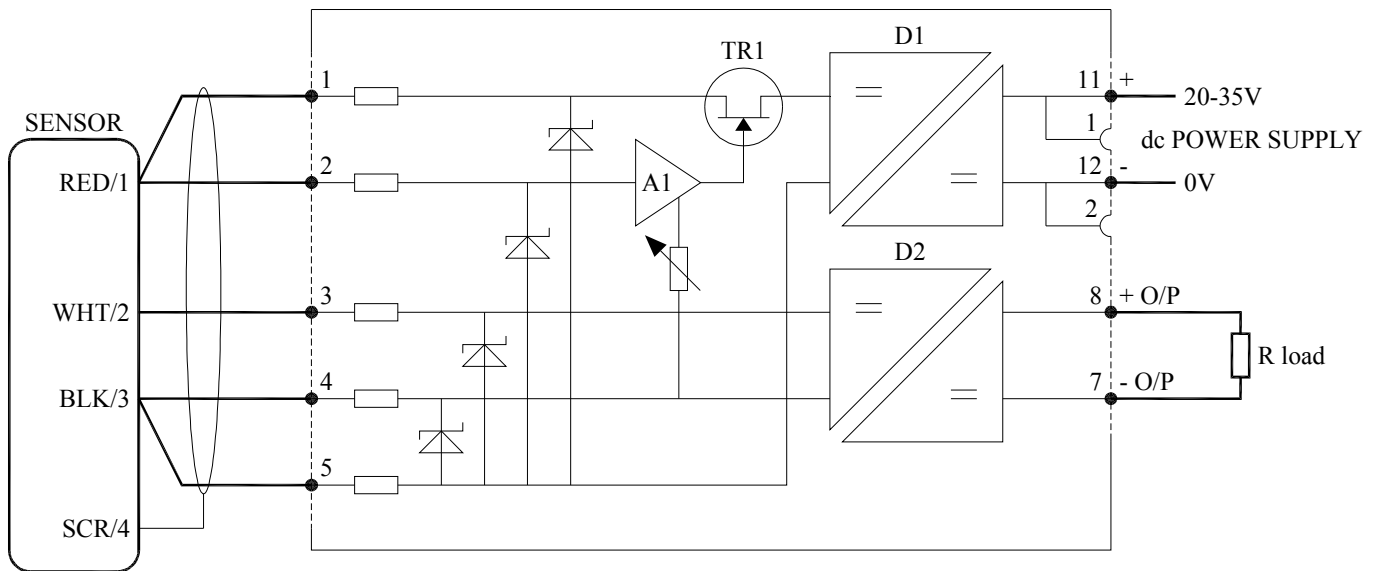
Installation Information

CONNECTIONS BETWEEN BX002 AND BX003 3-PORT ISOLATION BARRIERS AND POSITEK INTRINSICALLY SAFE SENSORS

3-wire Connection to Sensor



5-wire Connection to Sensor (for minimum errors)



Note:- The barrier provides isolation between the power, sensor and output ports, i.e. there is no direct electrical connection between these three ports.