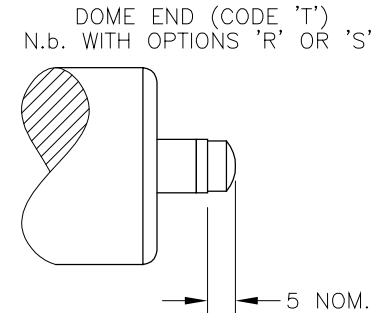
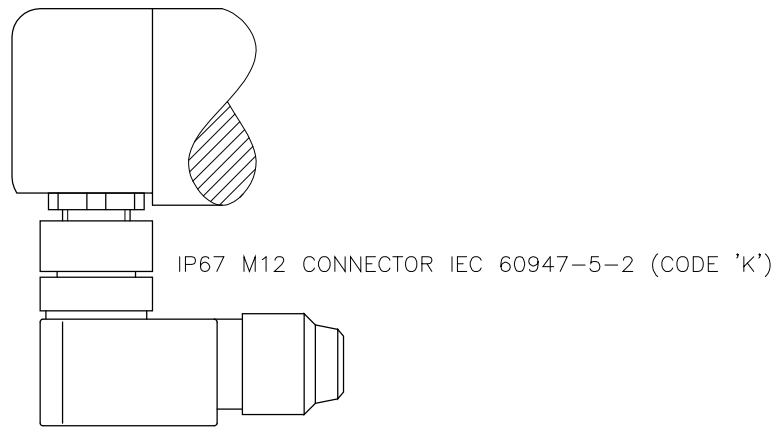
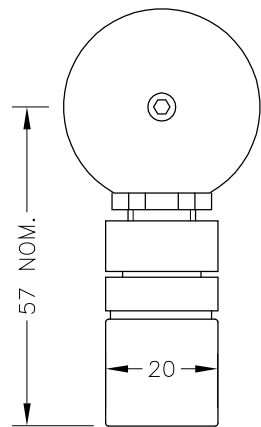
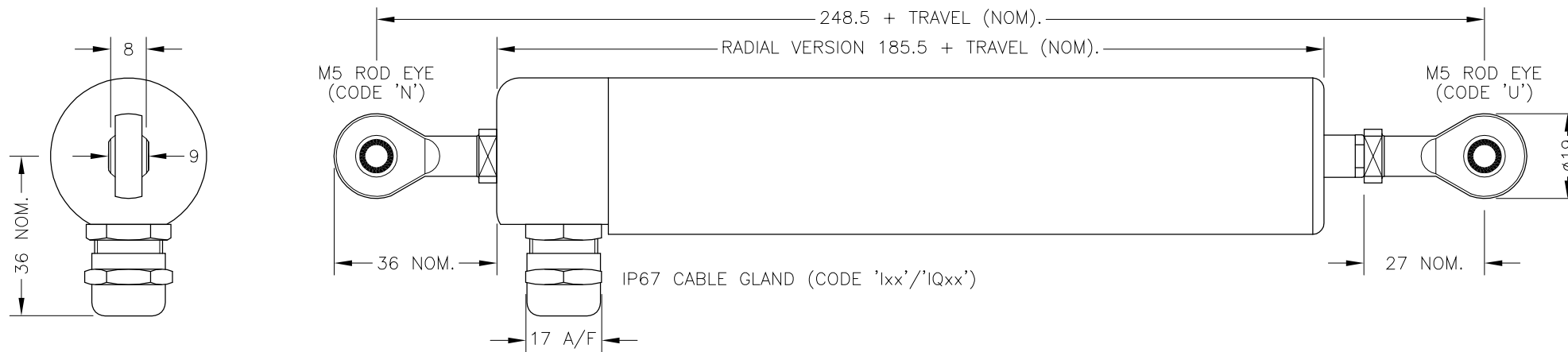
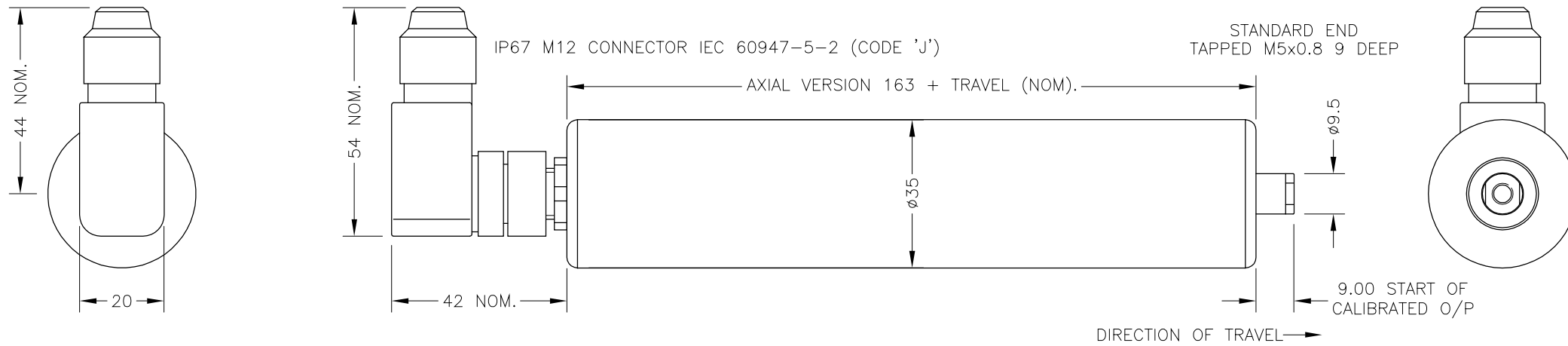


N.b. ROD-EYE ORIENTATION NOT GUARANTEED.



**ELECTRICAL OPTIONS/ SPECIFICATIONS**

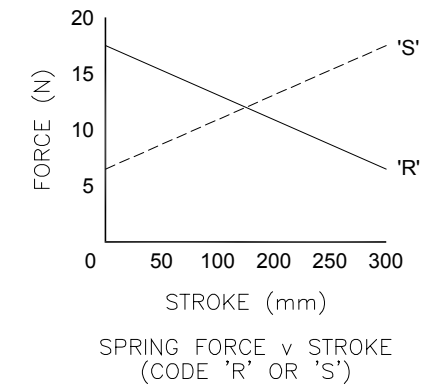
OUTPUT	SUPPLY	
0.5 TO 4.5V RATIOMETRIC	5V	
SUPPLY CURRENT 12mA TYP. 20mA MAX.		
CABLE: 0.2mm <sup>2</sup> , O/A SCREEN, PUR JACKET - SUPPLIED WITH 50cm OR REQUIRED LENGTH IN cm (15000cm MAX).		
STANDARD 3-CORE: JACKET 4mm BLACK	e.g. 'L50'	
OPTIONAL 5-CORE: JACKET 4.6mm BLUE	e.g. 'LQ50'	
CABLE/CONNECTOR* CONNECTIONS;		
3 CORE	5 CORE	CONNECTOR
RED	RED	:1 +Ve
-	ORG	:1 +SENSE (5-WIRE ONLY)
BLACK	BLACK	:3 0V
-	GRY	:3 -SENSE (5-WIRE ONLY)
WHITE	WHITE	:2 OUTPUT
SCREEN	SCREEN	:4 BODY

\*CONNECTORS; MAXIMUM CONDUCTOR CROSS SECTION 0.75mm<sup>2</sup>  
 RANGE OF DISPLACEMENT FROM 0-5mm TO 0-800mm e.g.76, IN INCREMENTS OF 1mm.

BODY MATERIAL: STAINLESS STEEL.

FURTHER OPTIONS:

- SINGLE PAIR OF BODY CLAMPS 'P'
- TWO PAIRS OF BODY CLAMPS 'P2'
- SPRING RETURN PUSH-ROD, TRAVEL ≤300mm
- RETURN TO EXTENDED POSITION (CODE 'R')
- RETURN TO RETRACTED POSITION (CODE 'S')
- PUSH-ROD FREE (CODE 'V') - NOT AVAILABLE WITH SPRUNG OPTIONS.



NOTE:- READ INSTALLATION SHEET H000-19 FOR FULL INSTRUCTIONS FOR USE.

CSA APPROVED TO  
 Class I Zone 0  
 Ex/AEx ia IIC T4 (Ta= -40 to 80°C)  
 Ex iaD 20 T93°C(Ta= -40 to 80°C)  
 Ui 11.4V, Ii 0.2A, Pi 0.51W

APPROVED FOR USE IN CONJUNCTION WITH A GALVANICALLY ISOLATED BARRIER.

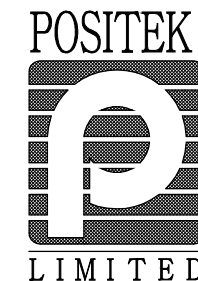
NOTE: APPROVAL ONLY APPLIES AT NORMAL ATMOSPHERIC PRESSURE!

OPTION	DESCRIPTION	APPROVED BY
C	OPTIONS 'R' & 'S' OVER TRAVEL DIMS MODIFIED - RAN1030.	PDM
D	RANGE WAS 50-600mm RAN1056	RDS
E	5-CORE OPTION ADDED ~ RAN1102	PDM
F	OPTION 'M' ADDED ~ RAN1166, RANGE NOTE AMENDED ~ RAN1200	PDM



THE PUSH-ROD RETRACTS A FURTHER 4mm NOM. FROM START OF CALIBRATED TRAVEL. STANDARD VERSIONS THE PUSH-ROD EXTENDS A FURTHER 8mm NOM. FROM END OF CALIBRATED TRAVEL, FOR SPRUNG VERSIONS: 'R': 1mm, 'S': 2mm. 'V' CODED PUSH-ROD WILL DEPART SENSOR BODY.

DRAWINGS NOT TO BE CHANGED WITHOUT REFERENCE TO THE CHANGE PROCEDURE. CHANGES TO PARTS USED IN INTRINSICALLY SAFE PRODUCT MUST BE APPROVED BY THE AUTHORISED PERSON. THIS IS AN UNCONTROLLED PRINT AND WILL NOT BE UPDATED.



C	28/07/15	CHECKED BY X ±0.4 X.X ±0.2 X.XX ±0.1 DIMS mm
D	9/11/15	
E	07/04/17	
F	29/08/17	RDS
DESCRIPTION		
H101 INTRINSICALLY SAFE STAND ALONE LINEAR POSITION SENSOR		
SCALE	12.5mm	DRAWING NUMBER
H101-11		REV F
SHEET 1 OF 1		